

How We Run Our Project



KRITA

Why study other projects?

What is KRITA?

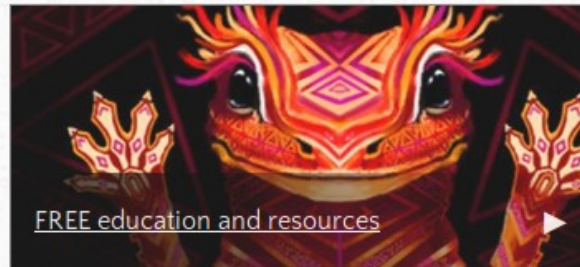
[Features](#)[Download](#)[About](#)[Learn](#)[Get Involved](#)[Donate](#)[Shop](#)[English](#)

Krita is a professional FREE and open source painting program. It is made by artists that want to see affordable art tools for everyone.

- concept art
- texture and matte painters
- illustrations and comics

[GET KRITA NOW](#)

Tools You Need to Grow as an Artist

[News](#)[Search](#)

[Creating a Python Plugin for Krita: Guest Article by Zlatko Mašek](#)

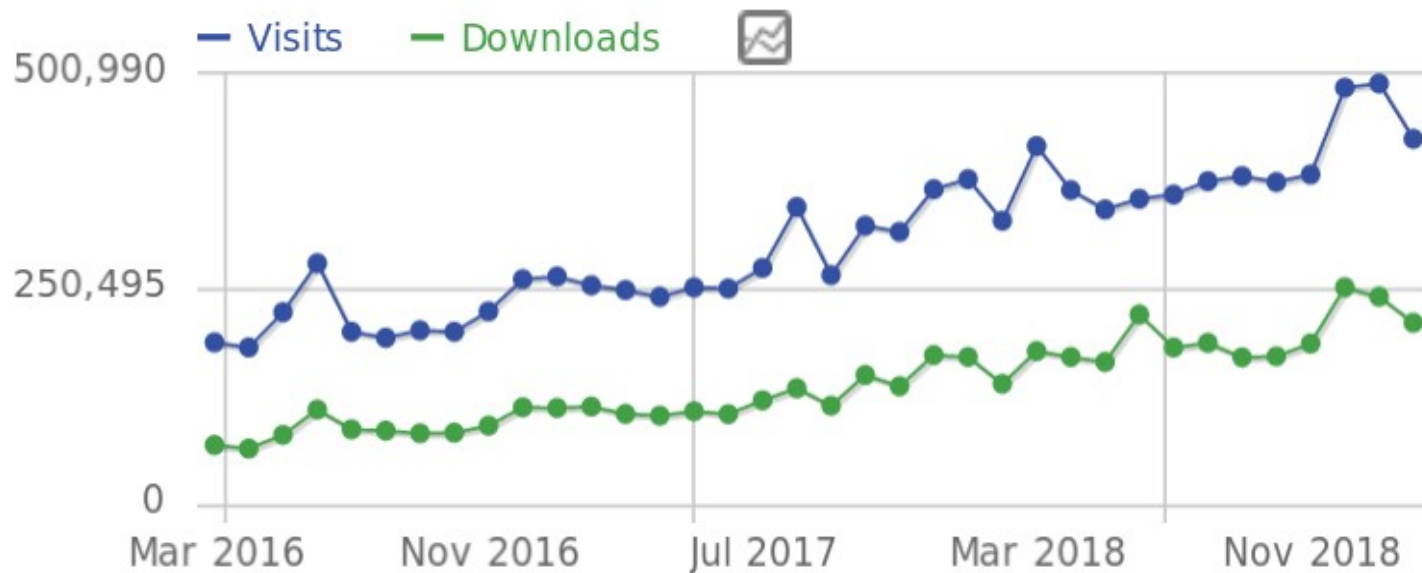
3/4/2019

[Interview with Ari Suonpää](#)

3/4/2019

[Google Summer of Code 2019: Call for](#)

Visits Overview (with graph)



Visits Summary



422,370 visits, **311,259** unique visitors



2 min 48s average visit duration

Who am I?



- Started helping in 2013
- Website
- UI Designer/Developer
- Author of Krita 2.9 book
- Volunteer

Scott Petrovic

[Products](#)[Develop](#)[Get Involved](#)[Donate](#)

Join the Game

Invest in freedom; become a personal member or enroll your company as a contributing member or patron.


[Learn More](#) >



The KDE® Community is a free software community dedicated to creating an open and user-friendly computing experience, offering an advanced graphical desktop, a wide variety of applications for communication, work, education and entertainment and a platform to easily build new applications upon. We have a strong focus on finding innovative solutions to old and new problems, creating a vibrant atmosphere open for experimentation.

[GitLab.org](#) > [GitLab Community Edition](#) > Issues > #53206

Open

Opened 4 months ago by  David Planella[Report abuse](#)[New issue](#)

KDE migration to GitLab

Background

KDE is considering a migration to GitLab: members from the [KDE Board of Directors](#), the KDE Sysadmin team and the KDE Onboarding Initiative have been following the GNOME migration as a model and have been in touch with the GNOME Foundation and GitLab. GitLab will be initially assisting them with a Proof of Concept to facilitate making an assessment and a decision that will ultimately be consulted with the KDE community.

The KDE Community is a free software community dedicated to creating an open and user-friendly computing experience, offering an advanced graphical desktop, a wide variety of applications for communication, work, education and entertainment and a platform to easily build new applications upon. We have a strong focus on finding innovative solutions to old and new problems, creating a vibrant atmosphere open for experimentation.

Goals

The main goals for a successful migration would be:

- More accessible infrastructure for contributors
- Code review integration with git
- Streamlined infrastructure and tooling
- Good relationship and open communication channel with upstream (GitLab in this case)

Discussion

We are at the initial stages of discussion, which can be followed on the [notes from our regular calls](#).

KDE is currently looking at a self-hosted solution rather than hosting at gitlab.com. Due to their policy of only hosting Free Software on their servers the present consideration is to use [gitlab-ce](#) with the [Core subscription](#)

Assignee

No assignee

Epic

None

Milestone

None

Time tracking

No estimate or time spent

Due date

No due date


Labels

[Open Source](#)


Weight

None

Confidentiality

 Not confidential

Lock issue

 Unlocked

52 participants



+ 45 more

Website Hosting, GIT and Downloads

QUERIES

Active Repositories

All Repositories

Edit Queries...

SEARCH

Advanced Search

COMMITTS

Browse Commits

</> Diffusion > Active Repositories

+ Create Repository

Active Repositories

🔍 Edit Query

☰ Use Results ▾

<div> <div></div> </div>	R883 Subversion R883:1536484: doc: Catalan Works 1,536,483 Commits	Sat, Mar 2, 4:16 PM Subversion
<div> <div></div> </div>	R158 Kdenlive 37d80b98368a: fix compilation 13,261 Commits · KDE Applications Kdenlive	Sat, Mar 2, 4:06 PM Git
<div> <div></div> </div>	R482 digiKam c1d4db795ed6: Merge branch 'development/dplugins' of git.kde.org:digikam into dplugins 43,479 Commits · DigiKam	Sat, Mar 2, 4:02 PM Git
<div> <div></div> </div>	R261 KMyMoney 5c2e515773d0: add missing files 6,368 Commits · KDE Finance KMyMoney	Sat, Mar 2, 3:30 PM Git
<div> <div></div> </div>	R52 KDevelop: PHP Support 3431ef364495: bypass the 5 MB maximum file size limit for the phpfunctions.php internal file 2,121 Commits · KDevelop	Sat, Mar 2, 2:39 PM Git
<div> <div></div> </div>	R32 KDevelop ecf5548543a4: Allow the maximum file size of parse jobs to be configurable 46,383 Commits · KDevelop	Sat, Mar 2, 2:37 PM Git
<div> <div></div> </div>	R878 Latte Dock d8738758a98a: restore normal behavior for applets size 3,660 Commits · Plasma	Sat, Mar 2, 1:35 PM Git
<div> <div></div> </div>	R286 KFileMetaData 91782bec91a0: Add missing include 621 Commits · Baloo Frameworks	Sat, Mar 2, 1:30 PM Git

Real-time Communication

#krita



Conversation Options Send To

NickServ

freenode-connect

#krita



#krita

This is a channel for developers and users of Krita. It's not a company support chat room, please be patient and stay around if you've got a question. | <https://phabricator.kde.org/source/krita/>. Unstabl...

(03:30:36 PM) babuloseo left the room (quit:).

(04:00:04 PM) samirosman left the room (quit: Quit: Leaving).

(04:01:33 PM) vkrause left the room (quit:).

(04:03:04 PM) Zinjanthropus [~angantyr@97-127-43-71.mpls.qwest.net] entered the room.

(04:03:05 PM) irina left the room (quit: Ping timeout: 244 seconds).

(04:15:18 PM) Seikusa [~Seikusa@xdsl-87-79-107-82.netcologne.de] entered the room.

(04:16:27 PM) konrados left the room ("Leaving").

(04:22:07 PM) karine left the room (quit: Quit: Leaving).

(04:40:32 PM) john_cephalopoda left the room (quit: Quit: Trees can see into your soul. Here they come.).

(04:42:41 PM) john_cephalopoda [~john@unaffiliated/john-cephalopoda/x-6407167] entered the room.

(04:52:37 PM) Wysteriary[m]: I just noticed something about the color selector changed this past week

(04:53:41 PM) Wysteriary[m]: The type of window that the Show color selector action displays used to not have window decoration and not appear in the taskbar

(04:54:30 PM) Wysteriary[m]: But in recent nightly's it does

(04:55:20 PM) Wysteriary[m]: Unfortunately I'm not using a mainstream window manager so I'm wondering if anyone is experiencing the same thing

(04:56:23 PM) Wysteriary[m]: I think the default shortcut is Shift+I to display the color selector

(05:18:21 PM) ivanyossi [~ivanyossi@189.130.222.37] entered the room.

(05:19:24 PM) babuloseo [~babuloseo@unaffiliated/babuloseo] entered the room.

(05:20:14 PM) babuloseo is now known as babuloseo_afk

(05:28:51 PM) john_cephalopoda left the room (quit: Quit: Trees can see into your soul. Here they come.).

(05:46:37 PM) ANUJG935 [7cfd1da1@gateway/web/cgi-irc/kiwiirc.com/ip.124.253.29.161] entered the room.

(05:46:38 PM) mode (+v ANUJG935) by ChanServ

160 people in room

boud
ChanServ
deevad
Wolthera_laptop
ANUJG935
Gremriel
Abreu[m]1
acheronuk
ahiemstra
almonsin
alxd
Amadiro
amyspark[log]
angular_mike_2
Animtim
anna-m
artista_f
asaba
Author
babuloseo_afk

Font Insert Smile! Attention!

Think of a nickname...

Nickname

I have a password ☐

Channel

#krita



Start...

Server and network ▼

Powered by Kiwi IRC



Chat room Directions

1. Enter a **Nickname**

2. Click **Start**

Even though the chat room may show a lot of people, sometimes it will take a few minutes before anyone can read it. If you are waiting too long for a response, you can try again later or checkout the forum.

Note that nobody on IRC is paid to answer your questions. This is not a company support channel but a place where developers

Mailing Lists

mail.kde.org Mailing Lists

Welcome!

Below is a listing of all the public mailing lists on mail.kde.org. Click on a list name to get more information about the list, or to subscribe, unsubscribe, and change the preferences on your subscription. To visit the general information page for an unadvertised list, open a URL similar to this one, but with a '/' and the list name appended.

List administrators, you can visit [the list admin overview page](#) to find the management interface for your list.

If you are having trouble using the lists, please contact mailman@kde.org.

List	Description
Akademy-br	Lista para os participantes da Akademy-br
Amarok	Amarok Mailing List
Amarok-bugs-dist	[no description available]
Antispam-Taskforce	A cross-project collaboration to fight web spam
Api-comments	Comments posted on api.kde.org
Atelier	Atelier - The KDE Printer Host for 3DPrinters
Bangarang	Bangarang media player mailing list
Calligra-author	Development list for the Calligra Author project
calligra-devel	Calligra Suite developers and users mailing list
Campkde-participants	Camp KDE (Jamaica) Participants List
Choqok-devel	[no description available]
Consulting	[no description available]
Digest	List for co-ordinating production of the KDE Commit-Digest
Digikam-devel	digikam developers room - digiKam - Manage your photographs with the power of open source
Digikam-users	digikam - Home Manage your photographs with the power of open source
Distributions	A list for collaboration between KDE and distributions
Elisa	Elisa Music Player coordination mailing list
Enterprise	Discussion Group for Sysadmins of KDE Desktop
Falkon	Falkon browser mailing list
FreeNX-kNX	User Support for FreeNX Server and kNX Client



Upcoming Service Downtime

Inbox ×KDE ×

Ben Cooksley <bcooksley@kde.org>

Fri, Jan 11, 3:18 PM



to informing, kde-devel, kde-core-devel, KDE, Krita's, KDevelop, kde-ev-campaign, sysadmin ▾

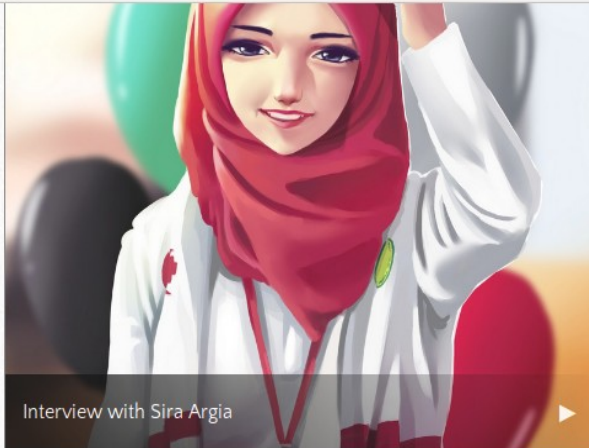
Hi all,

Sysadmin is currently in the process of planning server migrations for a large number of services which have significant visibility, and which are often substantially involved in the release process for projects as well as general community operation.

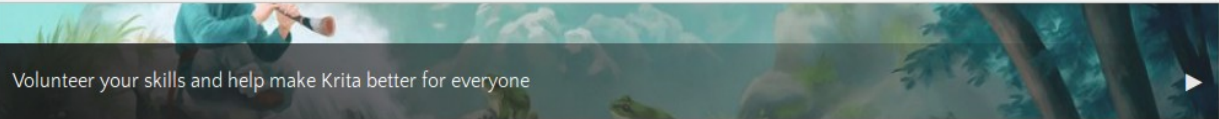
As it may take several hours to perform these migrations, we are asking people to please let us know when they are planning to do things for the next month or so to allow us to schedule the migrations accordingly. Each migration will be done separately in turn (this won't be an all at once exercise).

The affected services include:

- All CMS sites (dot.kde.org, krita.org, akademy.kde.org, labplot.kde.org, etc)
- All Wikis (userbase, techbase, community, etc)
- All CiviCRM instances
- Forum
- Nextcloud instance (share.kde.org)
- Content distributions networks (download.kde.org, files.kde.org, etc)
- Realtime chat services (Jabber, IRC bots such as pursuivant and sKreamer, BNC)
- Event management services (events.kde.org, conf.kde.org, reimbursements.kde.org)

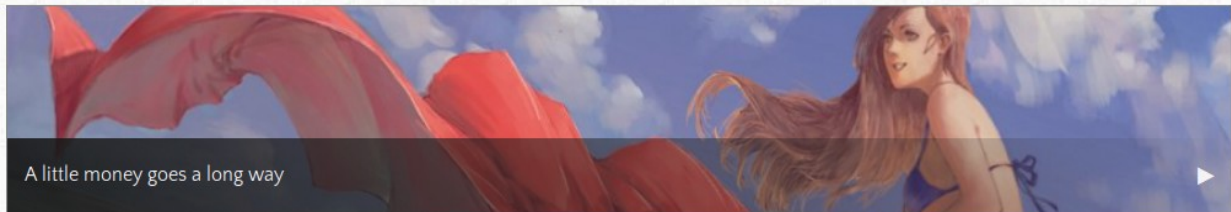


Interview with Sira Argia



Volunteer your skills and help make Krita better for everyone

Give Back



A little money goes a long way

Krita Mailing List

Be notified with new downloads and upcoming release information. We will not send you any type of Sale or Limited Time Only junk. Just the good stuff!

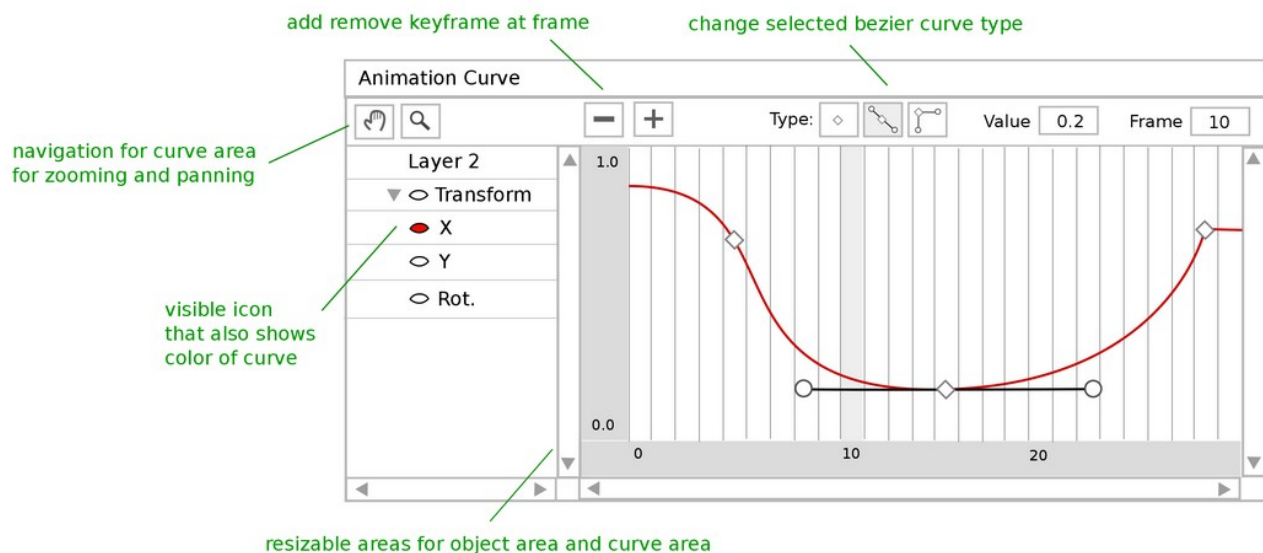
[Sign Up](#)

UI Design and Usability

Animation Curve editor and tweening

Open Public

Animation Curve and Tweening v2



- Edit Mock
- Close Mock
- Edit Related Objects...
- Automatically Subscribed
- Mute Notifications
- Award Token
- Flag For Later

Tags

Krita: Animation

Subscribers

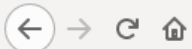
dkazakov

Manifest Tasks

T146: Interpolation curves

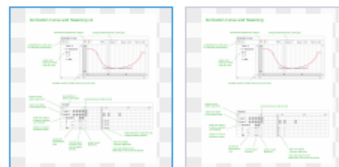
Authored By

scottpetrovic, Jun 17 2016


<https://phabricator.kde.org/M40>

Mock History

Current Revision



Mock Description

This wire frame tries to address all of the points from **T146**.



scottpetrovic created *Animation Curve editor and tweening*.

Jun 17 2016, 8:47 PM



scottpetrovic added an image: [animation-tween-editor.png](#).



scottpetrovic added a project: [Krita: Animation](#).



scottpetrovic added a task: [T146: Interpolation curves](#).



dkazakov added a subscriber: [dkazakov](#).

Jun 20 2016, 7:34 AM ▼

Hi, [@scottpetrovic](#)!

As far as I understood from your screenshot ([link](#)) the list of layers in the curve editing docker is not a must. How do you think, could we live without it? Like being able to show the curve editor to the right of the main timeline? It would make Jouni's life much easier :)



scottpetrovic added a comment.

Edited · Jun 20 2016, 7:38 AM ▼

I would think we would only need to show one layer's properties. Putting everything to the right was an idea. I haven't gotten much feedback on anything yet.



scottpetrovic added a comment.

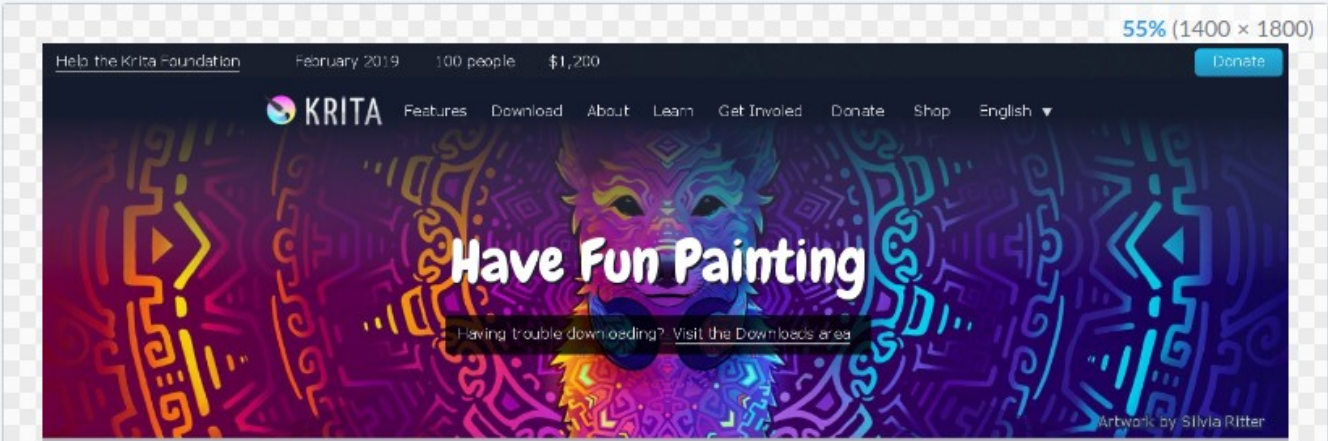
Jun 20 2016, 10:14 AM ▼

I talked with Bolle Bib over the chat with this. It sounds like it would be more helpful for him to have the curve editor in a separate window.

1. The zoom levels could be different. This can make scrubbing easier if the curve needs fine tuned adjustments.

Post-download page design update

☐ Open ☒ Public



55% (1400 x 1800)

- Edit Mock
- Close Mock
- Edit Related Objects...
- Automatically Subscribed
- Mute Notifications
- Award Token
- Flag For Later

Tags

Krita

Subscribers

kamathraghavendra, woltherav, rempt

Authored By

scottpetrovic, Thu, Feb 28

Google Summer of Code

If you are a university student, improve Krita this summer with software development

Learn More

Free Learning Resources

There is plenty of information you can learn about from our documentation

- Getting Started
- User Interface
- General Concepts
- Drawing Assistants
- Animation
- Tutorials
- User Manual
- Custom Brushes

Donate

It will not just make Krita better for you, but will help thousands of young artists improve without the burden of money or pirating.

Price Options *

One Time Donation

Amount **

Name *

Email *

Payment Method *

IDEAL

Donate



Introduction to Krita

Sara Tepes • 381K views • 2 years ago

PLEASE CHECK THESE CHANNELS OUT!! GDquest's channel: ...



DIGITAL ART| Grayscale to Color Tutorial

Sara Tepes • 341K views • 2 years ago

Hey, guys! This video has been super highly asked for, and I hope it answers your question on how I turn my black and white ...



Tutorial: Coloring and Shading - Digital Art

Saviroosje2 • 341K views • 1 year ago

Hello everyone! Today I made this digitalart - coloring video! I really hope you will find this video informative and interesting to ...



How to Paint Skin Tutorial

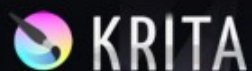
ericanthonyj • 331K views • 5 months ago

In this tutorial I show you how to paint skin digitally and I also give some tips on using color and basic anatomy. Painting skin is ...



COMO ANIMAR EN KRITA - Tutorial ¡Un programa GRATIS de animación!

QA Testing and Releases



Download Krita 4.1.7

Released on December 13, 2018 [Release Notes](#)

[Appimage](#) [Ubuntu PPA](#) [Flatpak](#) [Gentoo](#)

 [Linux 64-bit Appimage \(166MB\)](#)

Get the latest version without relying on your distro. This version does not support sound when doing animations. [Download the gmic-qt plugin for G'Mic to work.](#)

[System Requirements](#) ▾ [All Download Versions](#) ▾



Windows Store and Steam

[Windows Store](#)

[Steam Store](#)

Paid versions of Krita on other platforms. You will get automatic updates when new versions of Krita come out. After deduction of the Store fee, the money will support Krita development. For the Windows

Nightly Builds

Test out the latest builds that are created every day.

- **Krita Plus** ([Windows](#) | [Linux](#)) - Daily builds that only contain bug fixes on top of the stable version.
- **Krita Next** ([Windows](#) | [Linux](#)) - Daily builds that contain new features, but could be unstable.

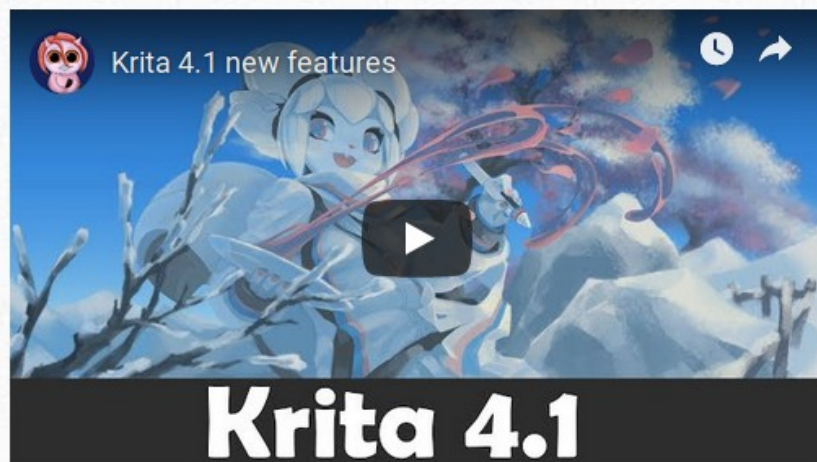
Windows Shell Extension

[Download \(1.3MB\)](#)

The Shell extension is included with the Windows Installer. An optional add-on for Windows that allow KRA thumbnails to appear in your file browser.

Krita 4.1 Release Notes

Krita 4.1 is the second feature release in the Krita 4 series and is released only three months after 4.0. But there is still a heap of interesting new things and improvements to check out!



Note!

We found a bug where activating the transform tool will cause a crash if you had selected the Box filter previously. if you experience a crash when enabling the transform tool in krita 4.1.0, go to your kritarc file (docs.krita.org/en/KritaFAQ.ht

Reporting Bugs & Feature Requests

KDE Bugtracking System - Bug List

[Home](#) | [New](#) | [Browse](#) | [Search](#) | [\[?\]](#) | [Reports](#) | [My Requests](#) | [Preferences](#) | [Help](#) | [Log out](#) [scottpetrovic@gmail.com](#)

Mon Oct 22 2018 23:01:34 UTC

[Hide Search Description](#)

Component: General Product: krita Resolution: ---

64 bugs found.

ID	Product	Comp	Assignee	Status	Resolution	Summary	Changed
399696	krita	General	krita-bugs-null@kde.org	CONF	---	Forced close with Internal Error message in kis_shortcut_matcher.cpp, line 557 [USE_QT_XCB]	12:28:06
392251	krita	General	krita-bugs-null@kde.org	REPO	---	Krita appimages crash or hang when using touch on a wacom cintiq touch display	11:49:01
399796	krita	General	krita-bugs-null@kde.org	CONF	---	"Last saved" template highlighted instead of the "last used" (user templates only)	Sun 12:44
393112	krita	General	krita-bugs-null@kde.org	CONF	---	Autosave files don't get made for new documents derived from templates	Thu 10:31
399379	krita	General	krita-bugs-null@kde.org	CONF	---	Mouse scroll doesn't work in UI comboboxes drop-down list	2018-10-16
399627	krita	General	dimula73@gmail.com	ASSI	---	[Freehand brush] Crash while painting, backtrace ★★★	2018-10-14
399749	krita	General	dimula73@gmail.com	ASSI	---	Crash when converting a Transparency mask to Selection mask	2018-10-14
399751	krita	General	dimula73@gmail.com	ASSI	---	SIGSEGV when converting a Local selection layer to Transparency mask	2018-10-14
399664	krita	General	krita-bugs-null@kde.org	CONF	---	Cursor stuck on "col-resize" once hovered the UI dockers (USE_QT_XCB)	2018-10-12
399560	krita	General	krita-bugs-null@kde.org	CONF	---	Bezier Curve Tool doesn't have a Anti-aliasing option	2018-10-11
398380	krita	General	krita-bugs-null@kde.org	REPO	---	Krita won't handle big files with a lot of layers	2018-10-09
398911	krita	General	krita-bugs-null@kde.org	REPO	---	Top region in window will block wacom pen cursor on retina displays	2018-10-09
396509	krita	General	krita-bugs-null@kde.org	REPO	---	Krita randomly becomes unresponsive, or exits entirely	2018-10-09
390642	krita	General	krita-bugs-null@kde.org	CONF	---	Cursor gets stuck with the wrong icon after moving between canvas and gui	2018-10-09
398358	krita	General	boud@valdyas.org	CONF	---	News widget cannot get news on Windows	2018-10-07
395278	krita	General	krita-bugs-null@kde.org	REPO	---	Krita gets locked into GUI thread. (GDB backtrace)	2018-10-06
397402	krita	General	krita-bugs-null@kde.org	REPO	---	Invisible guides	2018-10-01
395195	krita	General	krita-bugs-null@kde.org	REPO	---	Could not save as (Ctrl+Shift+S)	2018-09-30
396675	krita	General	krita-bugs-null@kde.org	REPO	---	Could not save - Failed to save the annotations for layer ...	2018-09-29
363971	krita	General	krita-bugs-null@kde.org	CONF	---	Autosave file for the original document not deleted when saving as another file	2018-09-06
393402	krita	General	krita-bugs-null@kde.org	CONF	---	Krita 4 does not show image dimensions in MacOS	2018-09-01

krita Highlight All Match Case Whole Words 1 of 1 match

Managing Volunteer Tips

Whatever works best for them

- Volunteers aren't paid, keep them interested
- Keep programmers from learning the entire code base
- Don't rely too heavily on them

Documentation



Search docs

English

User Manual

General Concepts

Reference Manual

Tutorials and Howto's

Krita FAQ

Contributors Manual

Resources



[Docs](#) » Welcome to the Krita 4.1 Manual!



Welcome to the Krita 4.1 Manual!

Welcome to Krita's documentation page. Krita is a sketching and painting program designed for digital artists.

As you learn about Krita, keep in mind that it is not intended as a replacement for Photoshop. This means that the other programs may have more features than Krita for image manipulation tasks, such as stitching together photos, while Krita's tools are most relevant to digital painting, concept art, illustration, and texturing. This fact accounts for a great deal of Krita's design.

[The manual as epub](#)



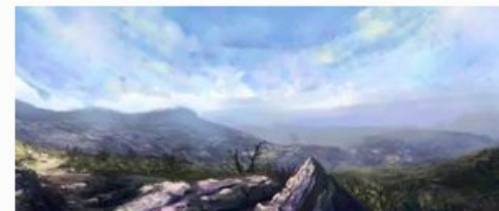
[User Manual](#)

Discover Krita's features through an online manual. Guides to help you transition from other applications.



[Tutorials and Howto's](#)

Learn through developer and user generated tutorials to see Krita in action.



Marketing & Fundraising

Everything you do is marketing

- Bug fixes and features
- Animated GIFs. People love those (Peek)
- YouTube
- Reach beyond just your application



Krita Developer Fundraiser: let's squash the bugs

The 2018 Krita fundraiser is over! Thanks for participating!

Our goal this year is to make it possible for the team to focus on one thing only: stability. Our previous fundraisers were all about features: adding new features, extending existing features. Thanks to your help, Krita has grown at a break-neck speed! But writing new code is only half the story. This time, we want to focus on squashing bugs and stabilizing the new code. And sometimes things aren't out-and-out broken, but unpleasant to work with. A bit uglier than needed. More cumbersome than you'd like. That needs fixing as well!

Download Krita Now!

Raised

€ 26.842

141 days, and 2 hours

Remaining

DONATE NOW

Share on:



G+

€50+ Donation Reward

Ramon Miranda's Digital Atelier brush bundle. This also includes over 2 hours of video training on brush creation and painting. We will send out links each day at the end of the (CEST) afternoon.

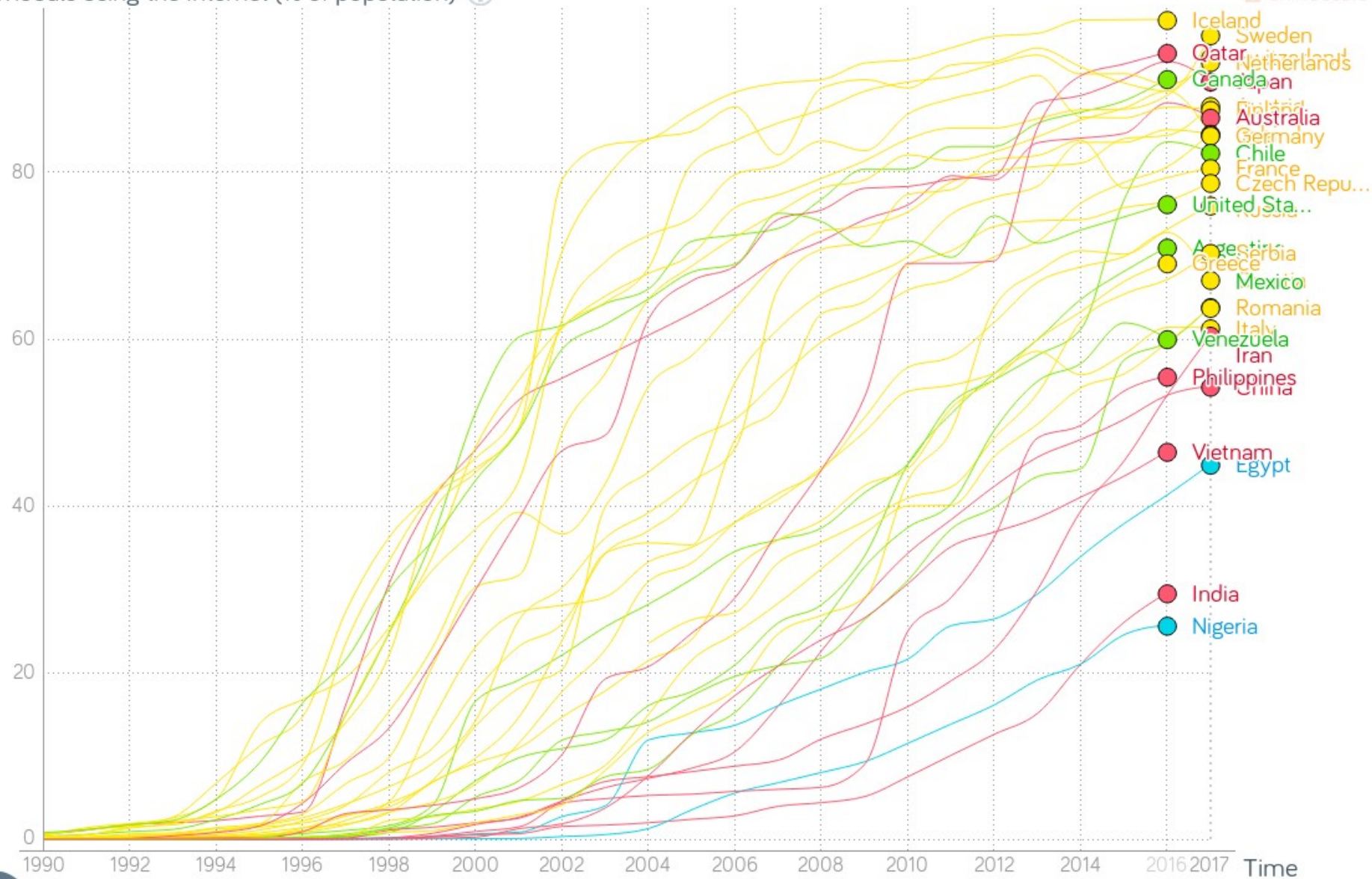
Finances

Something that is always lacking

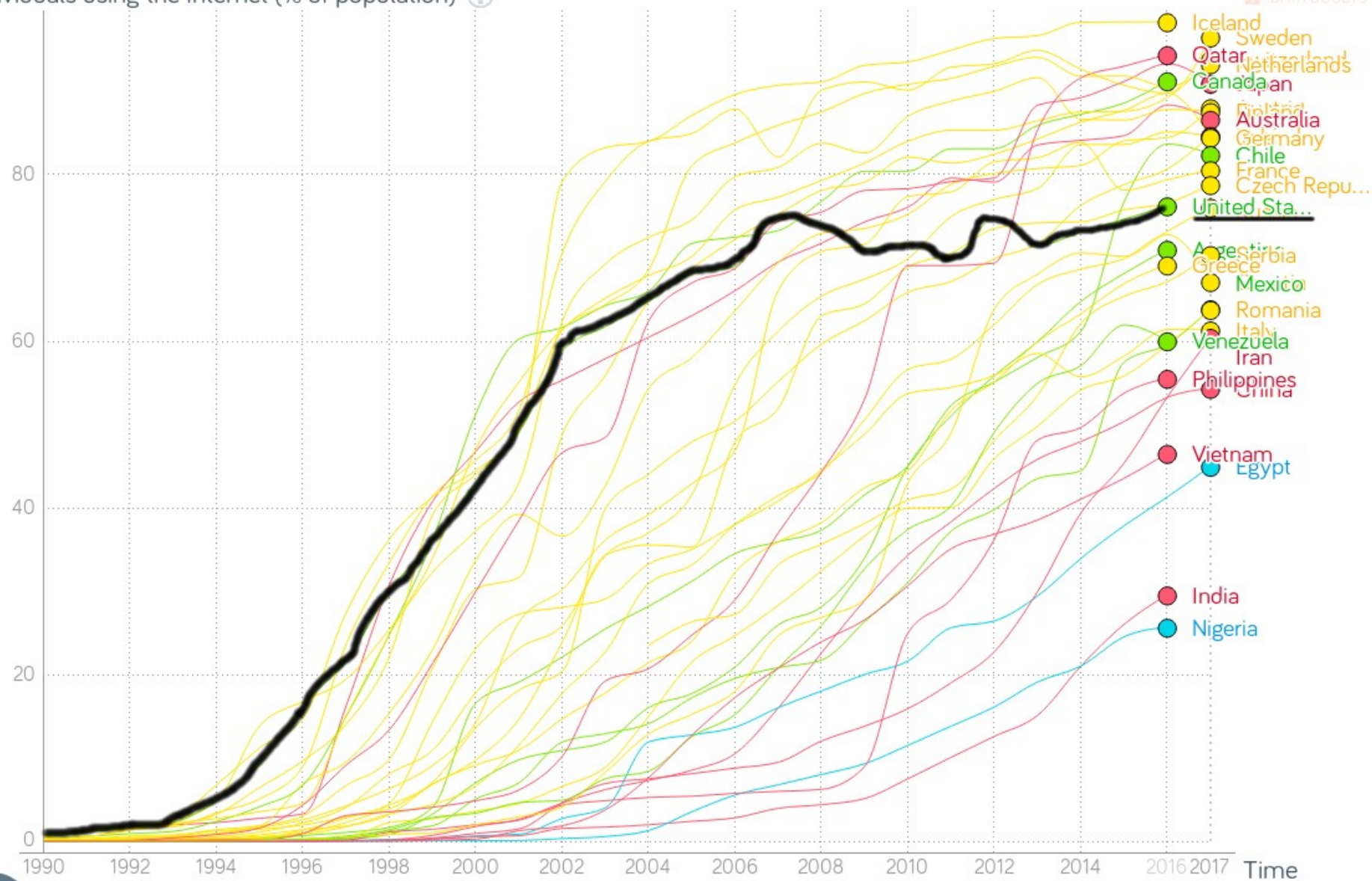
- Windows + Steam Store – pays maintainer
- Monthly donations + fundraisers – pays 1 developers
- Contracts with companies like Intel

Future Needs

Individuals using the Internet (% of population) ?



Individuals using the Internet (% of population) ?



Source: gapminder.org

Conclusion

Questions?



Scott Petrovic

Twitter

@scottpetrovic

IRC

scottyp

SCALE

Expo Hall 431