

# Exemplars in practice

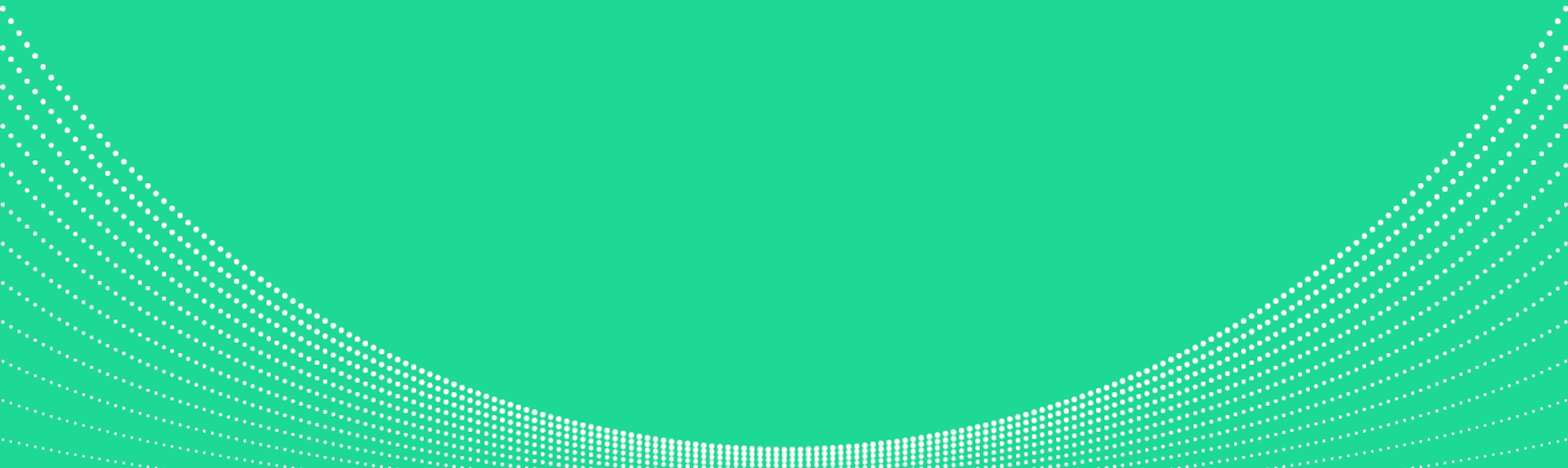
Joel Groen, Chronosphere  
July 30, 2022  
SCALE 19x

# Agenda

- Before exemplars  
⋮
- What are exemplars?  
⋮
- Exemplars in practice  
⋮
- Beyond exemplars



# Before Exemplars

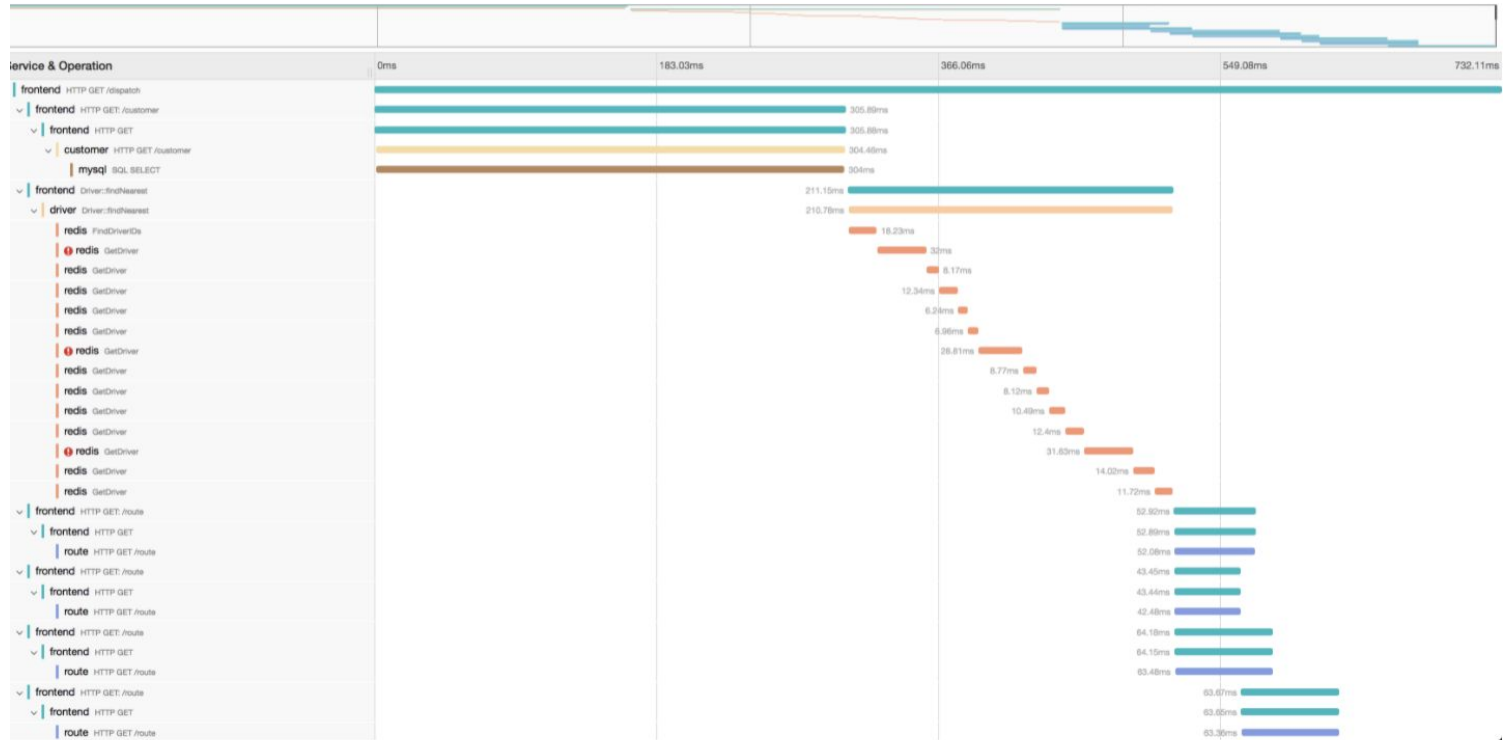


# Life before exemplars

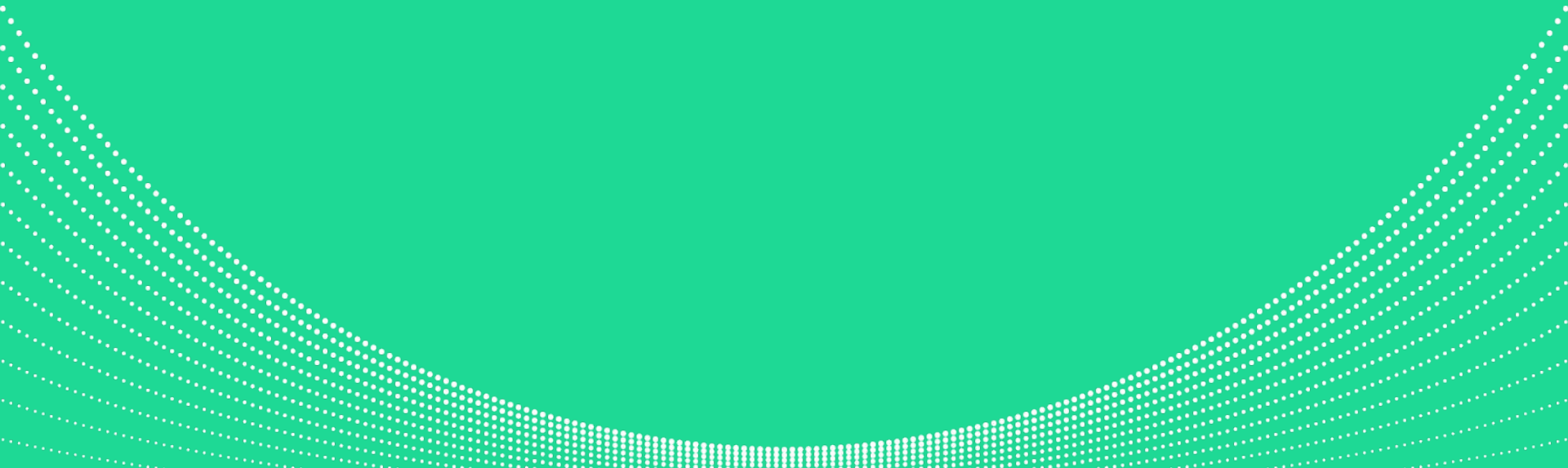
You receive an alert that the errors are spiking for a given service. Now what?



# Scroll through trace data

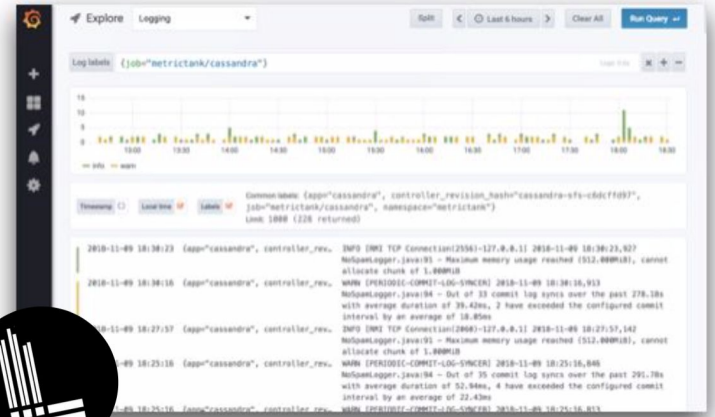
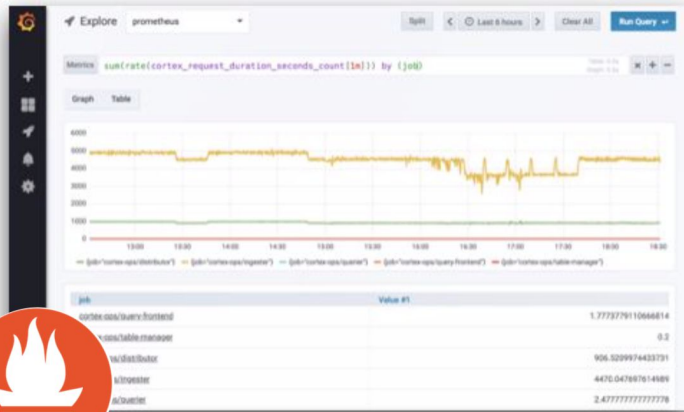


# Integrations



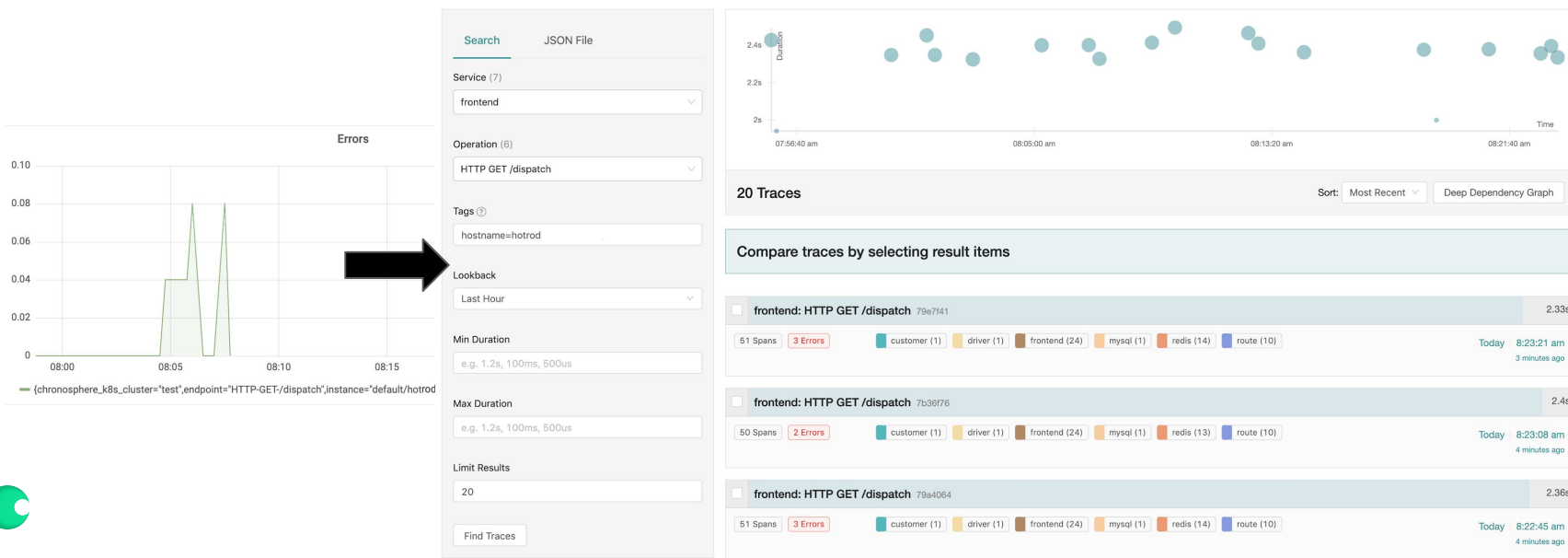
# Current Integrations

Increasingly, more Observability platforms providing two or more signals (logs, metrics, traces)



# A closer look at integrations

If you take a closer look at how jumping between metrics and traces is today, they are generally linked by common set of labels and time window.





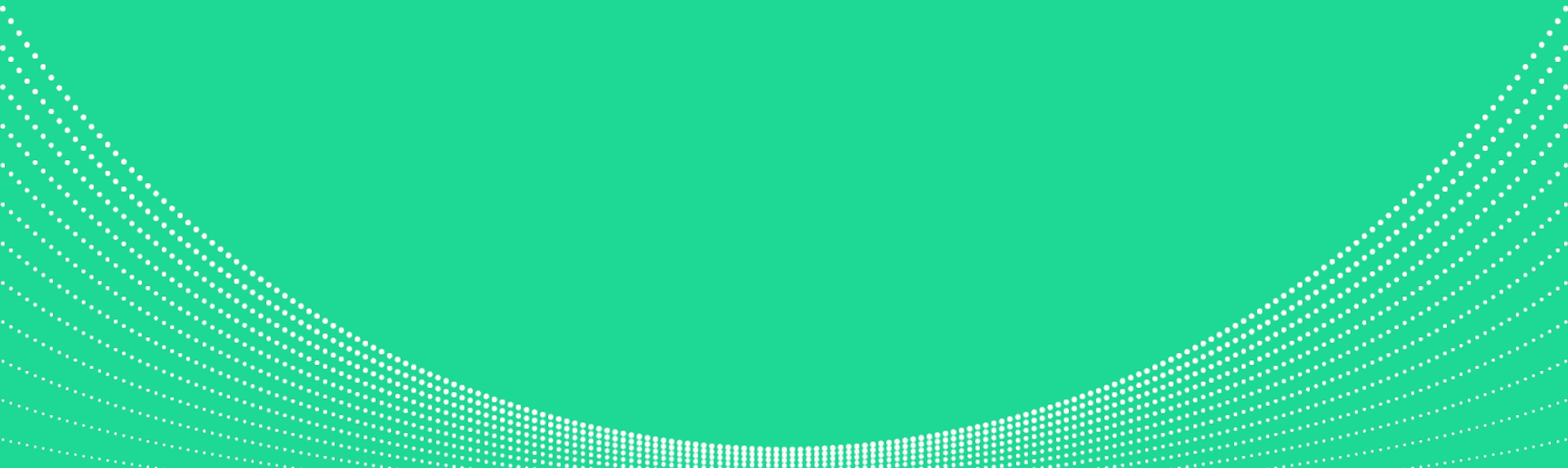
# A closer look at integrations

This narrows down search space in terms of time window and labels, but:

- Querying metrics with `sum(...)` or any other aggregation will drop tags
  - Context lost for jumping from metrics to traces
- Only “magical” when you store every trace
  - For a lot of users is prohibitively expensive.
- When sampling, the chances of having the right trace is low
  - Especially debugging edge cases – P99



# What are exemplars?



# Exemplars

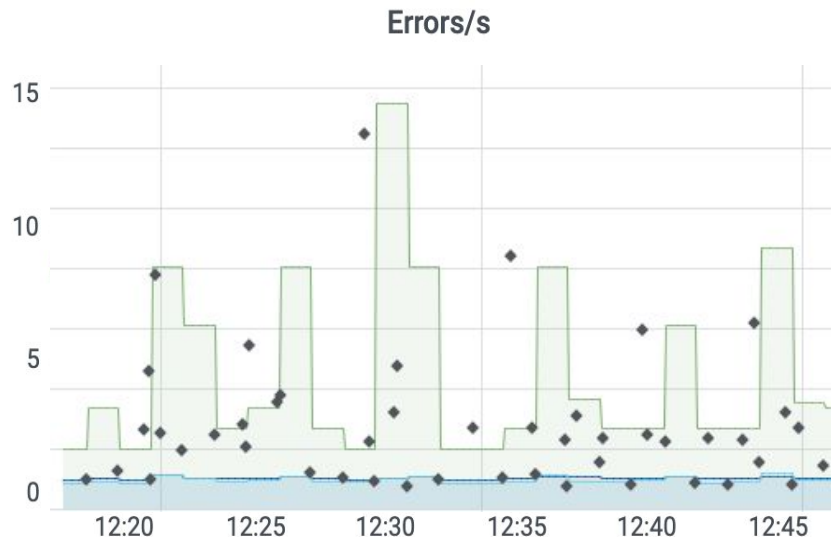
Metric data

+

Some other data (i.e. a traceID) that  
relates to the metric data

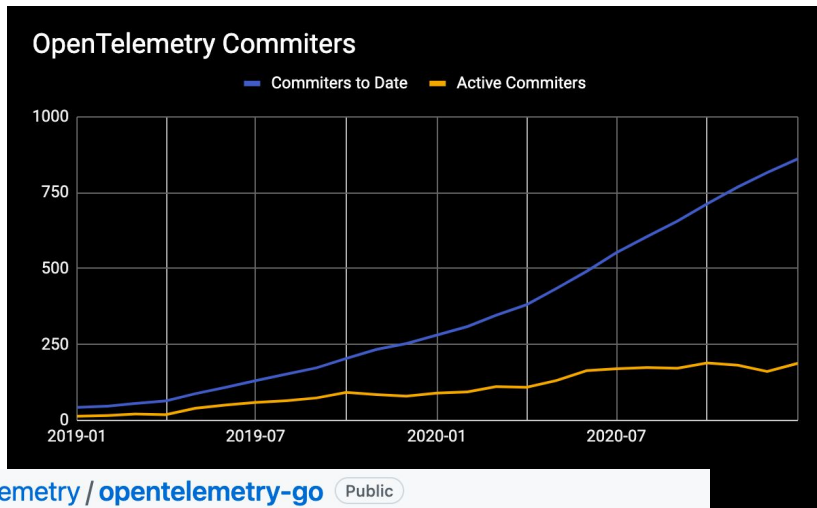
=

An easy way to jump from a metrics  
dashboard with many requests to a  
single example of a request



# Exemplars are...

- ✓ Great for looking at binary problems
- ✓ A way for engineers to quickly jump between data types
- ✓ On the rise with open standards, like OpenTelemetry and OpenMetrics, as a way of linking open source metrics and tracing solutions



open-telemetry / opentelemetry-go Public

<> Code Issues 123 Pull requests 14 Discussions Actions

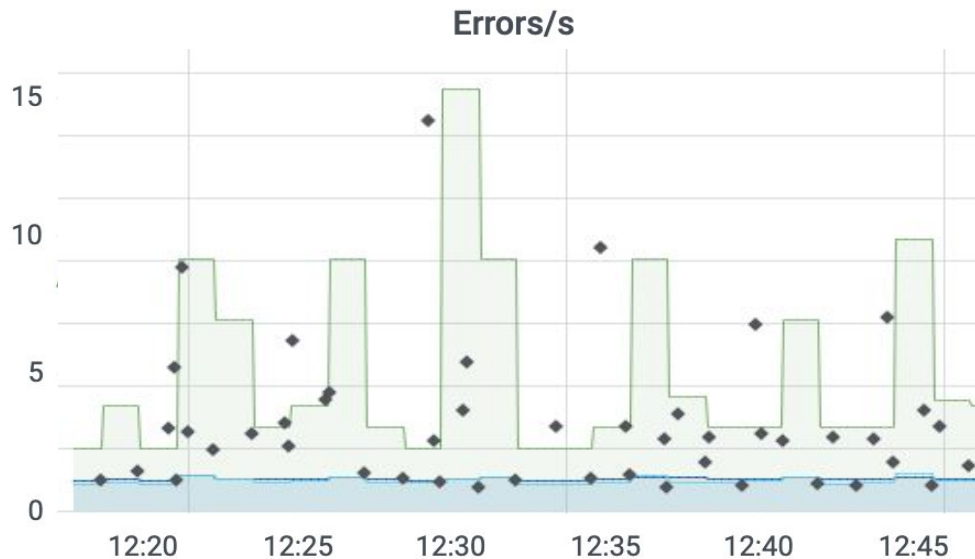
Add support for exemplars #559

Open rghetia opened this issue on Mar 16, 2020 · 3 comments



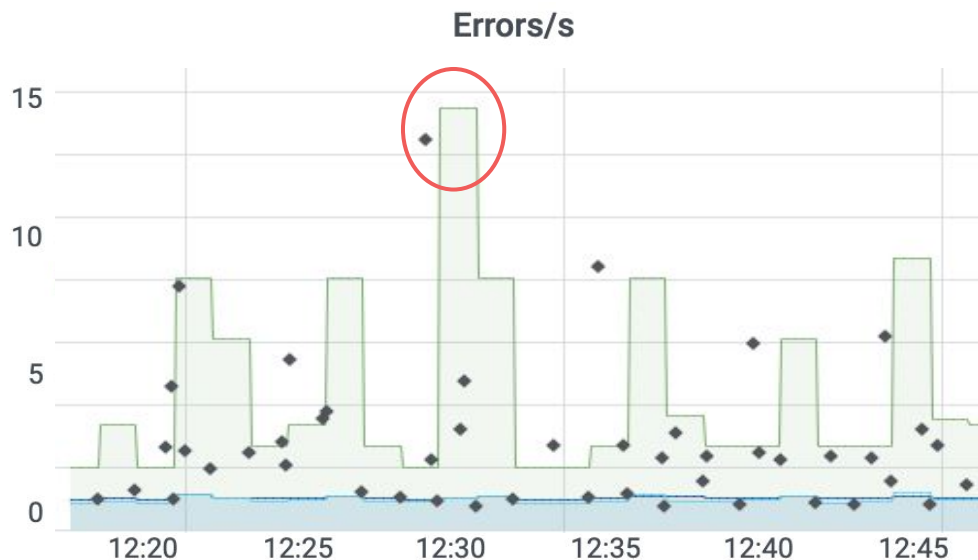
# You triage the alert

You go to the relevant dashboard to begin your investigation



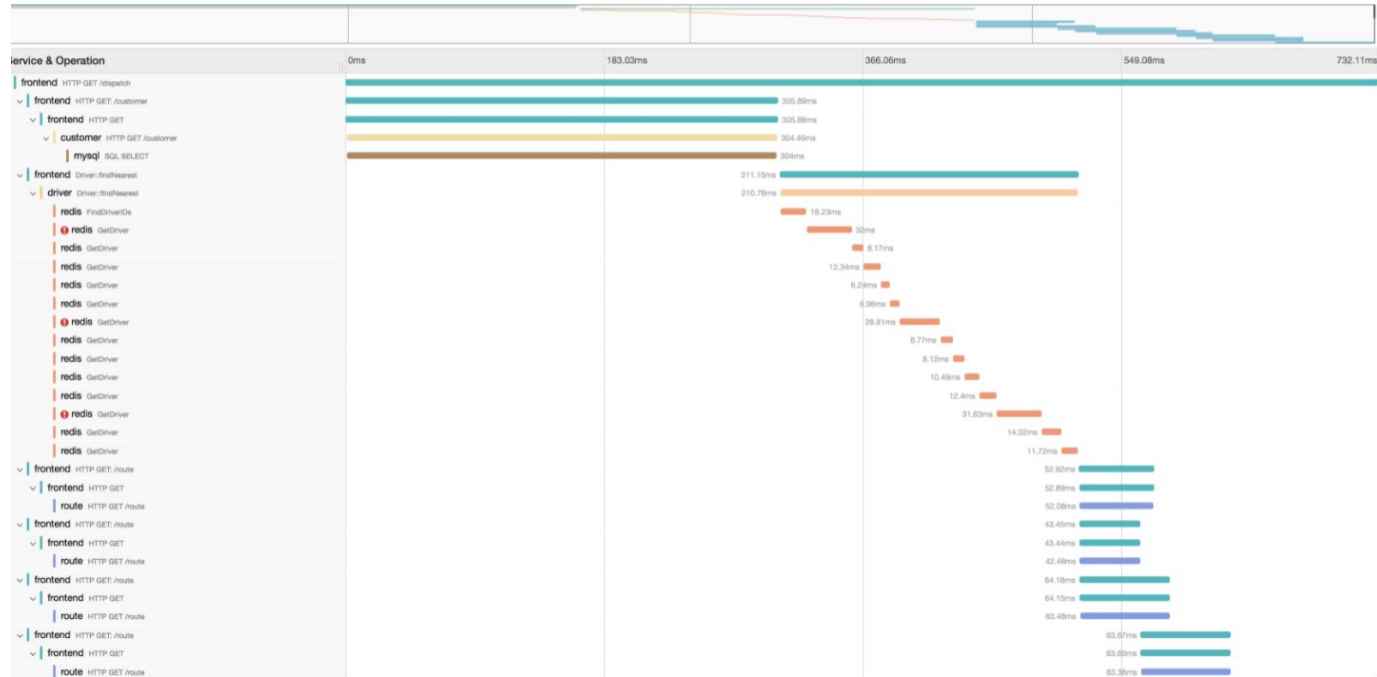
# You triage the alert

You click on an exemplar around the time of the spike, which sends you to a tracing solution to view the distributed trace



# You triage the alert

The distributed trace shows you the authentication request from an Android user has timed out



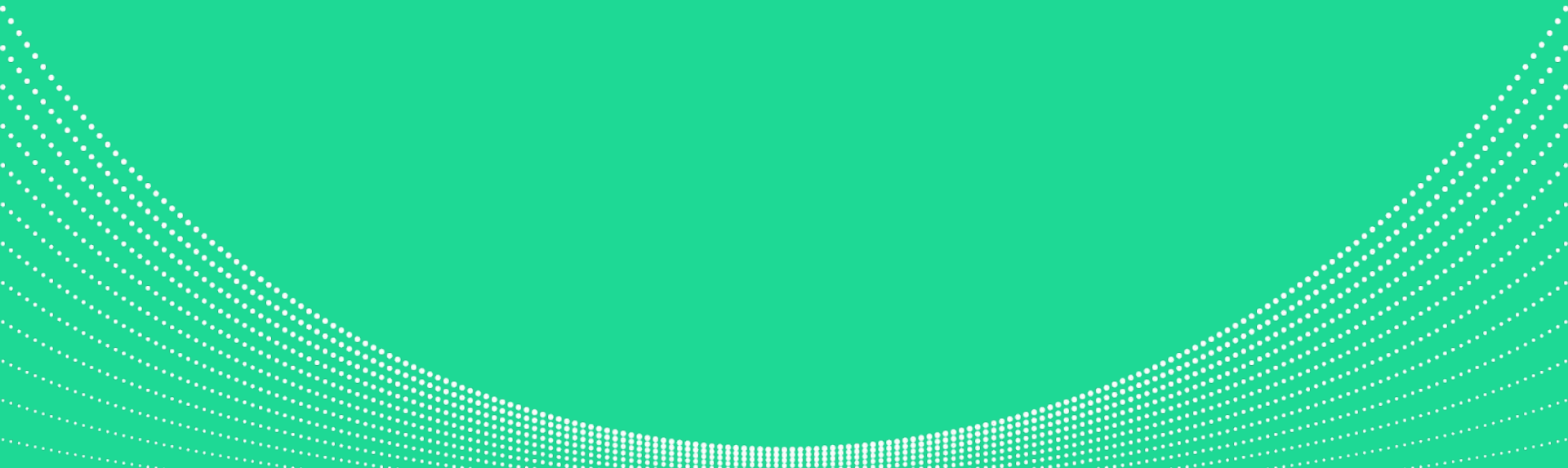
# You still have a lot of questions

- Is the spike in errors related only to Android users, or are iOS users affected as well?
- Does this affect all versions of Android?
- Is there any correlation between client geography and errors?
- Is the timeout THE error to focus on?





# When exemplars are not enough



# Good for homogeneous, but not heterogeneous traces

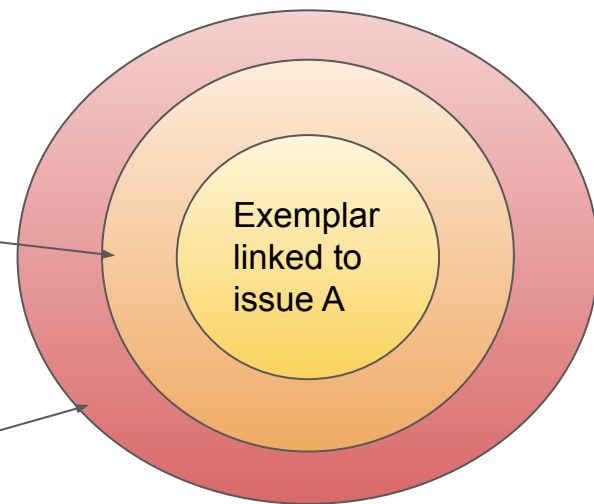
✗ Exemplars are tied to a single trace, not a population of traces

✗ A single trace rarely has enough context to resolve an issue

Issues A, B, C all active at time of alert, so how do you know for sure which one to focus on...

Issue B has larger impact, but not the problem causing the alert

Issue C has the largest impact and is causing the alert



# Difficult to identify “relevant” traces

- ✗ Application developers don't have enough context to be able to publish the “right” exemplar
- ✗ It's like looking for a needle in your observability haystack!



# Beyond Exemplars



# Beyond Exemplars

- ✓ Link 100% of your metrics and traces – no aggressive or forced sampling
- ✓ Flexibly query across the entire population of traces (not just one) to identify outliers and/or trends
- ✓ Get context and identify patterns for your traces by setting which variables to query for



# Demo



Visit us at **Booth 215** or follow us **@chronosphereio**

Claim your **free**  
**Chronosphere**  
**T-Shirt**



Enter our raffle to win  
a **Oculus Quest 2**  
**headset**



Scan the QR code

**Take back control of your observability**

Tame rampant data growth and cloud native complexity with increased business confidence

Trusted by the best in the industry



ASTRONJMER



# Thank you!

Come see us at Booth #215 or follow  
@chronosphereio on Twitter and LinkedIn